



CITY OF CAPE TOWN
ISIXEKO SASEKAPA
STAD KAAPSTAD

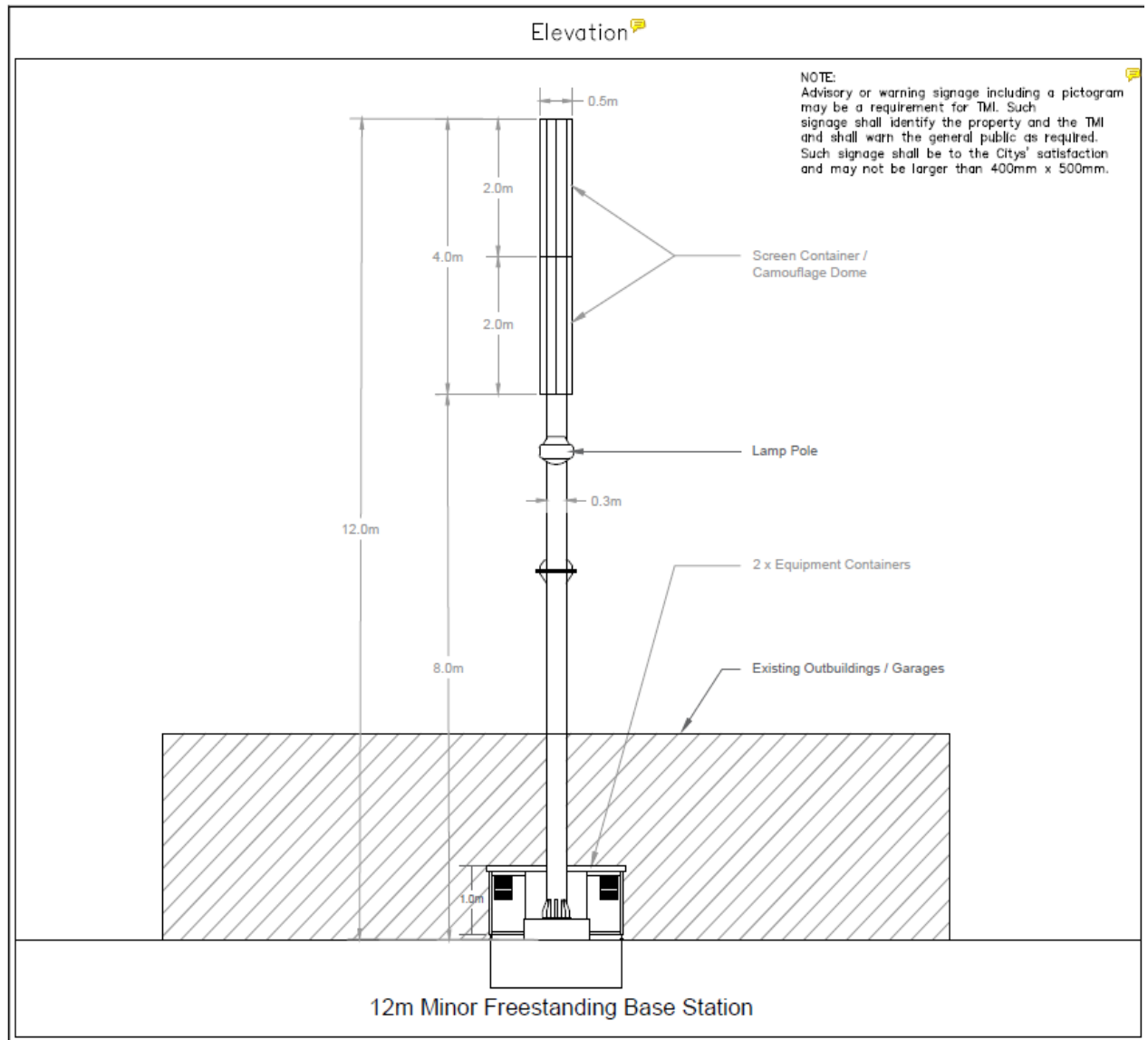
INFORMATION STATEMENT

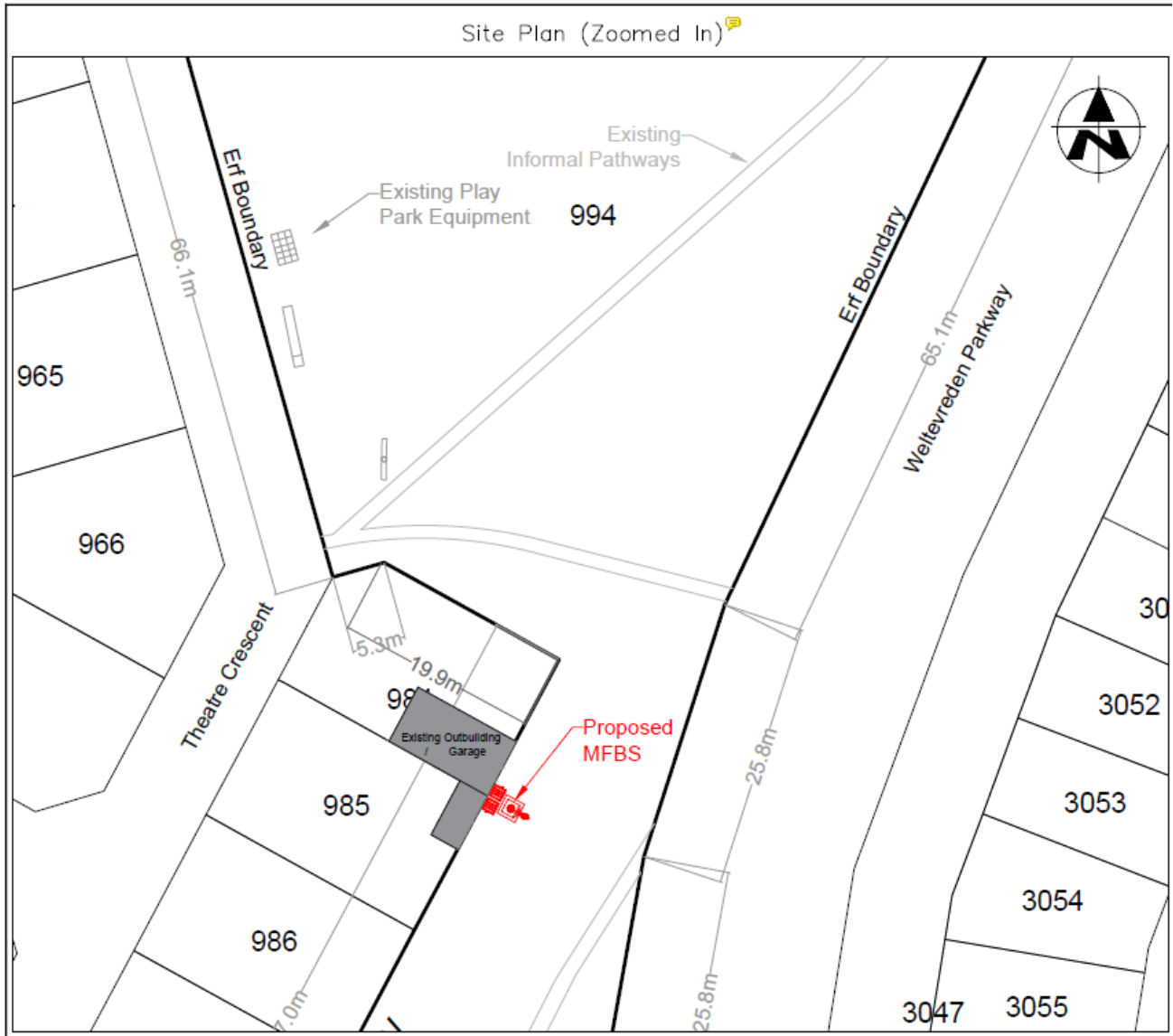
PROPOSED LEASE OF A PORTION OF ERF 994 WELTEVREDEN VALLEY, 7 WELTEVREDEN CRESCENT, WESTGATE FOR A 12 METER MINOR FREESTANDING TELECOMMUNICATION BASE STATION: RICH REWARDS LEASING (PTY) LTD

- a) Reason: a small portion (of $\pm 5.99\text{m}^2$) is required for the installation of Telecommunication Infrastructure.
- b) Expected benefit: it will provide improved and uninterrupted telecommunication services (for wireless/LTE connectivity);
- c) Expected proceeds: that the City will receive a market related rental of R5 359, 57 for the proposed lease for Telecommunication Infrastructure purposes;
- d) Expected gain or loss: no loss will be incurred by the City arising from the granting of right; only gaining improved and uninterrupted telecommunication services.
- e) The proposed transaction included a call for alternative proposals for the same intended usage. The call for alternatives is not limited to a single bidder. This should include the proposed rental, visual impact, landscaping and public amenity.

Superimposition and Site Info

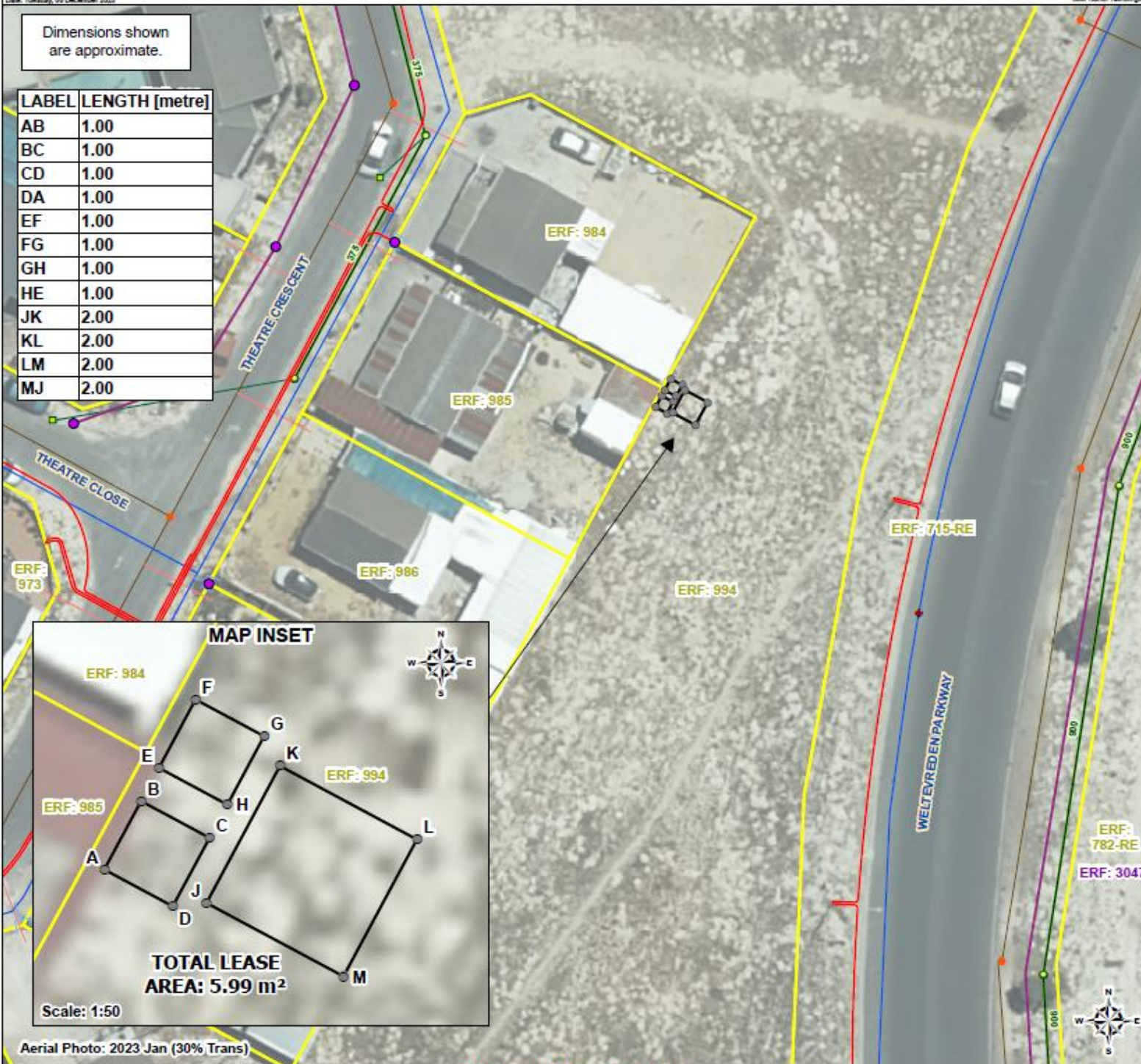






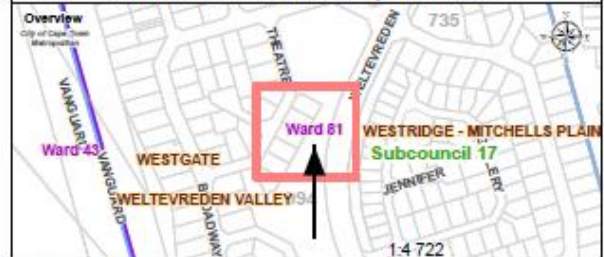
Dimensions shown
are approximate.

LABEL	LENGTH [metre]
AB	1.00
BC	1.00
CD	1.00
DA	1.00
EF	1.00
FG	1.00
GH	1.00
HE	1.00
JK	2.00
KL	2.00
LM	2.00
MJ	2.00



PROPERTY LEASE OUT PORTION OF WELTEVREDEN VALLEY - ERF 994

7 WELTEVREDEN PARKWAY, WESTGATE



Legend

- Telkom Pipe Junction Box
- Telkom Existing Underground Route
- Survey Title Points
- Non-Surveyed
- LEASE AREA
- Elec - Underground Cables
- Water - Hydrants Reticulation
- Water - Reticulation Connection
- Water - Mains Reticulation
- Sewer - Connection Line
- Sewer - Manholes
- Sewer - Mains Reticulation
- Stormwater Junction
- STW - Manhole
- Catchpit
- Stormwater Conduit
- STW - Pipe
- STW Connection
- Property
- Confirmed
- Registered

Notes:

Application for a Telecommunication Lease

- The figure ABCDEFGHJKLM represents a portion of registered ERF 994 WELTEVREDEN VALLEY, LAND PARCEL KEY 358724, Zoning Scheme : Open Space 2 : Public Open Space in total extent of approximately 5.99 m² owned by City Of Cape Town.
- Title Deed No. T 53723/1999.
- The figure ABCD and EFGH represents the proposed equipment cabinet measuring approximately 1 m² respectively and figure JKLM represents the proposed minor base station measuring approximately 3.99 m² in extent.
- Telecommunication services position is shown as accurately as possible but should be regarded as approximate only.

Ward Number: 81, Subcouncil: 17

Scale: 1:300

Drawn By: NOSIHLE MHLONGO Telephone: +27 (0) 21 400 2948
Email: Nosihle.Mhlongo@capetown.gov.za Date: Tuesday, 05 December 2023

CITY OF CAPE TOWN
LIXIKO SAKENAPA
STAD KAAPSTAD
City Of Cape Town Metropolitan Municipality
Property Management: GIS and Surveys
Civic Center
Cape Town
8001
Tel: +27 (0) 21 400 2226
Email: mshudu.mshudu@capetown.gov.za

Project Manager: Gary Dammert

Plan Number: LIS3120

File Reference: HO 14/3/6/1/2/432/A22

Decliner
Gary.Dammert@capetown.gov.za

City of Cape Town accepts no responsibility for the accuracy or completeness of the data presented on this map and will not be held liable for damages, including loss of profits or consequential damages, arising out of the use of this information.

Please note this is an A3 map.
To view the map print out in scale it must be printed on an A3 page.